



## **NEW LOGISTIC BRIDGE GERMANY TO MEXICO AND USA**



March 2011



**...more than just an industrial park...**



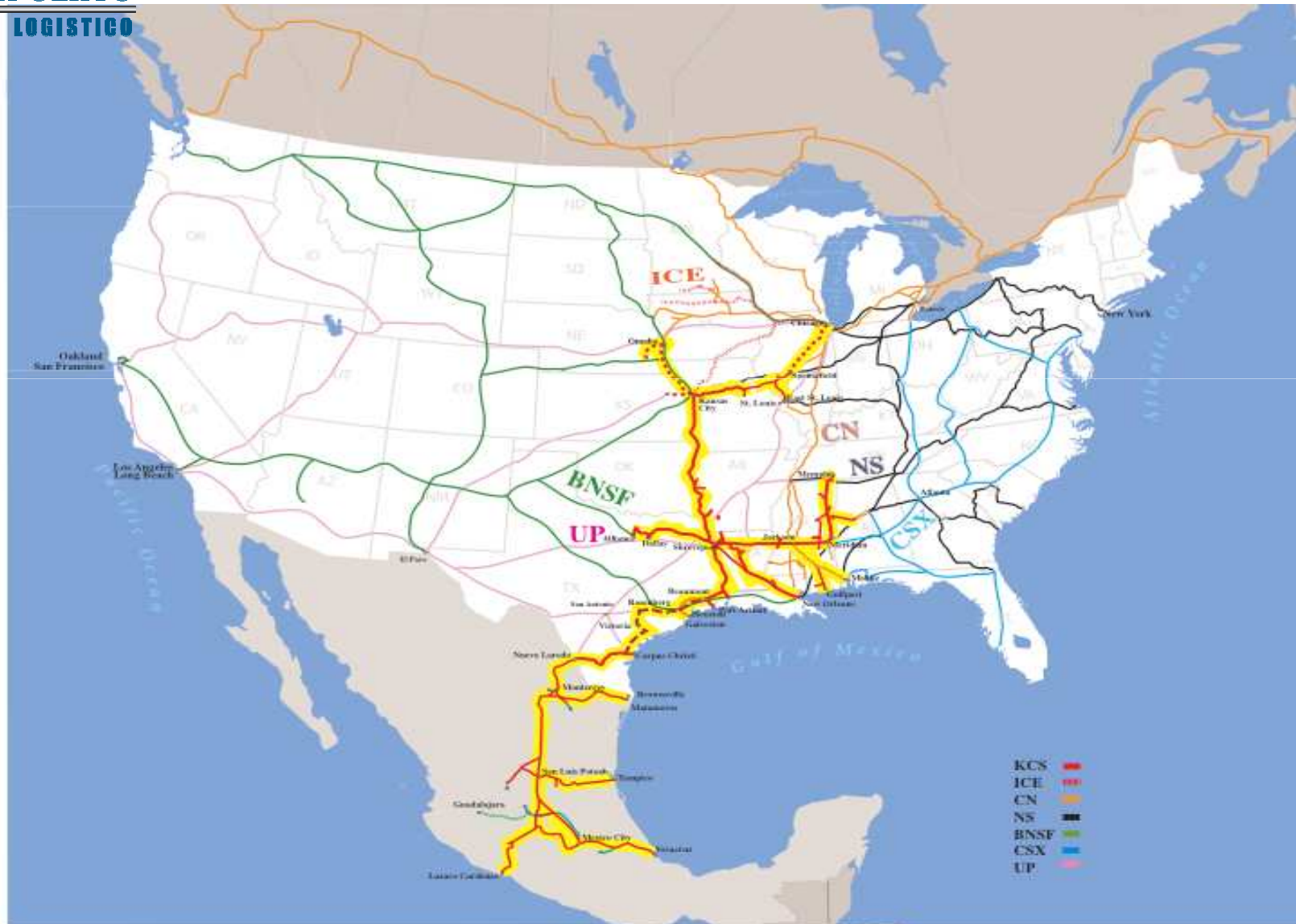
## PRINCIPAL ACCESS TO PORTS & BORDERS





**INTERPUERTO**  
**PARQUE LOGÍSTICO**

# NAFTA CORRIDOR MEXICO – USA - CANADA





**INTERPUERTO**  
**PARQUE LOGISTICO**

DOMESTIC AREA

FREE TRADE ZONE





## **INTERPUERTO**

---

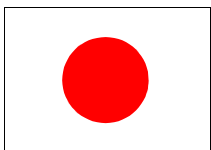
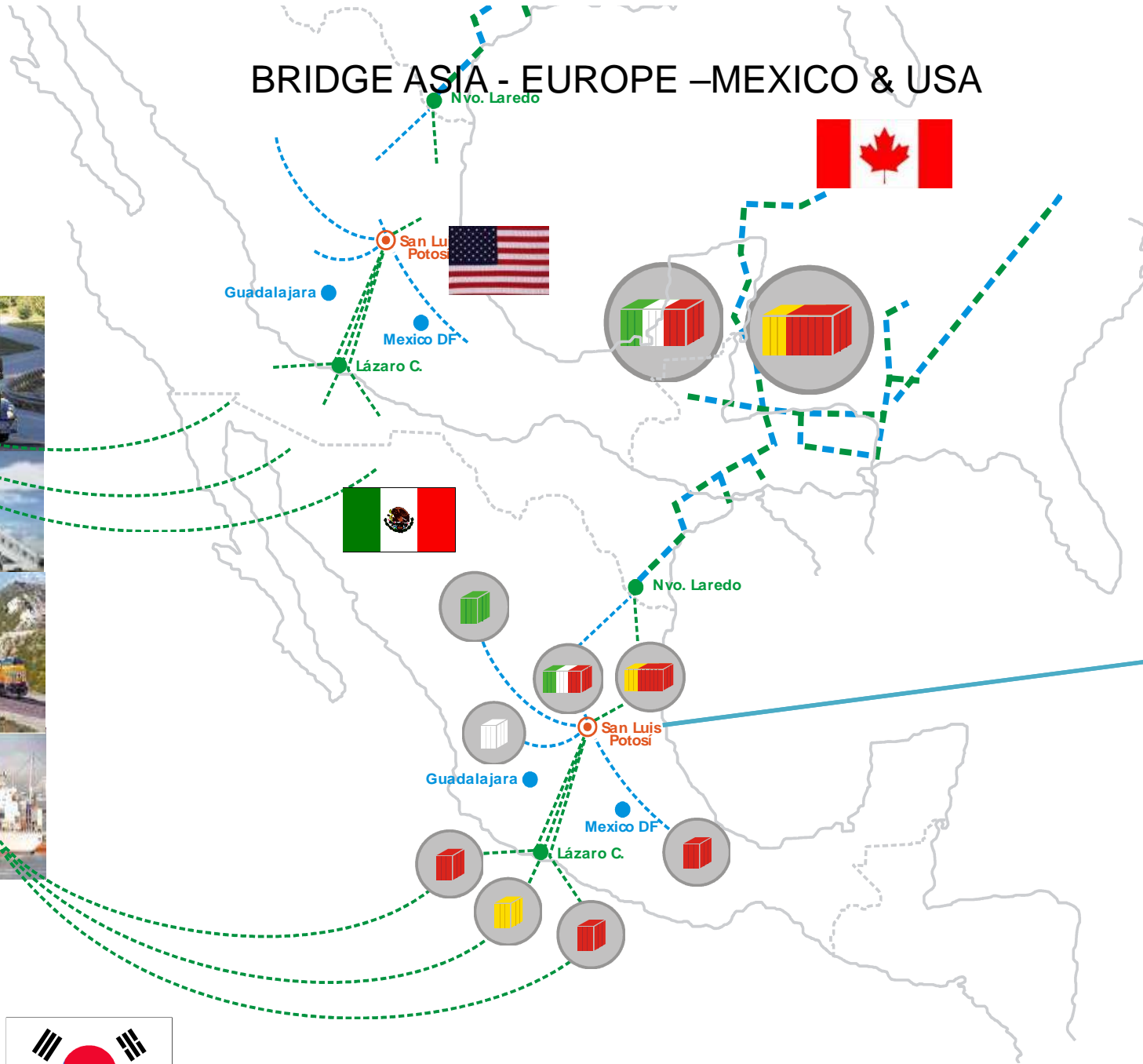
### **PARQUE LOGÍSTICO**



- ✓ Customs Office
- ✓ 150,000 TEUS Annually
- ✓ High security levels
- ✓ The Biggest Railway Terminal in México

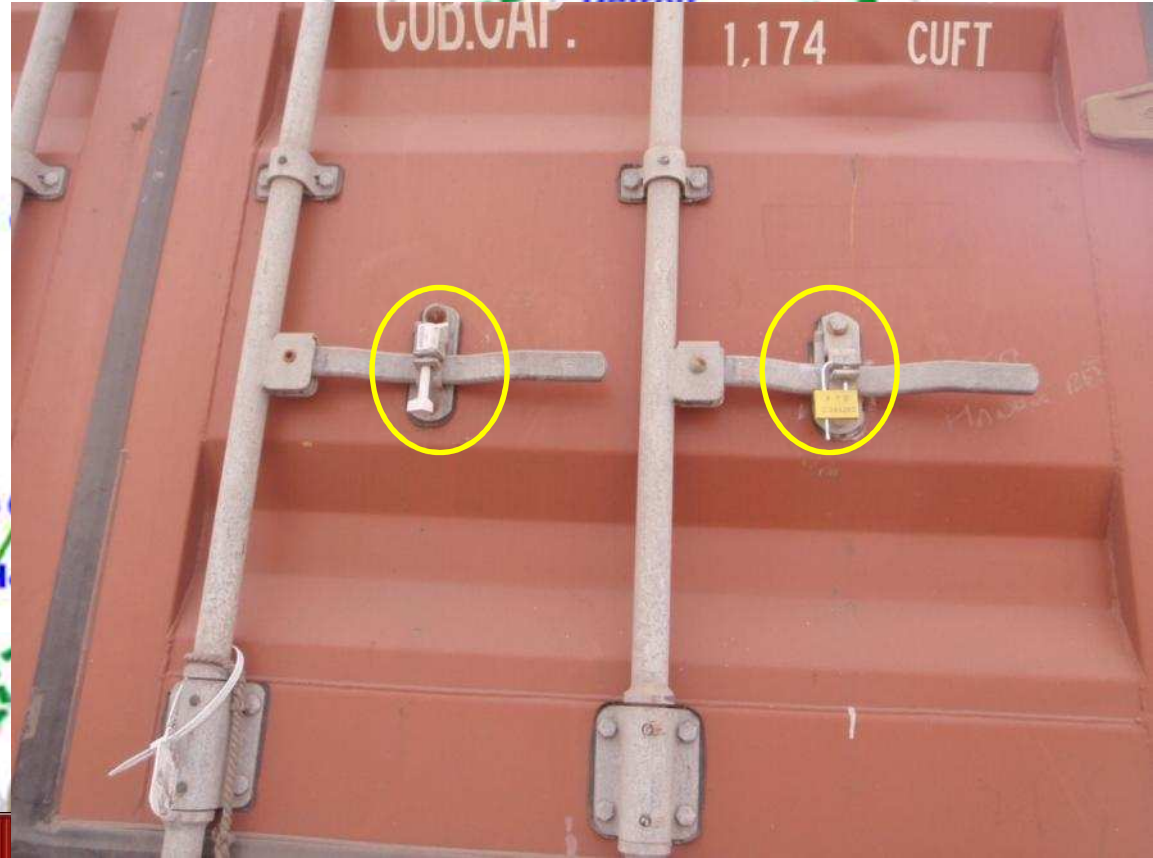


# BRIDGE ASIA - EUROPE - MEXICO & USA





Kansas



Lázaro C.

✓ NON STOP AT PORTS OR BORDERS

✓ NON PHISICAL INSPECTION



## NO MANEUVERS AT PORTS & BORDERS

Containers arrive to Interpuerto with their Original Seals from the supplier and the Shipping Company,



NON FORWARDERS UNLOAD CARGO

SIMPLE CUSTOM PROCEDURES

EASY TRANSPORTATION DOCUMENTATION

OVER THE ROAD, RAILROAD & AEREO TRANSPORTATION

# COMPETITIVENESS



## States by region

- Border & North = Baja California Sonora, Chihuahua, Coahuila, Nuevo Leon y Tamaulipas
- Center –Bajío = Aguascalientes, Guanajuato y San Luis Potosí
- Center = Querétaro, Estado de México, Ciudad de México y Morelos

	Wage	Land	Construction	Water	Gas	Electricity
North Border	1.00	1.00	1.00	1.00	1.00	1.00
North	1.00	1.00	1.00	1.13	0.98	0.98
<b>Center - Bajío (SLP)</b>	<b>0.68</b>	<b>0.50</b>	<b>0.70</b>	<b>0.79</b>	<b>0.39</b>	<b>1.03</b>
Center	0.86	0.81	0.73	1.35	0.39	1.04

## KEY FINDINGS

Wages are 25% to 52% more competitive at the Centro-Bajío Region than in the North Border.

Lower Land costs at Centro-Bajío

Turnover at Centro-Bajío is 70% better than in the North region.



## **INTERPUERTO** **PARQUE LOGISTICO**

## **INDUSTRIAL PARK**

- **MODERN TELECOMUNICATION NETWORK**  
(Digital Lines / Fiber Optic)
- **PRIVATE, RELIABLE AND ABUNDANT WATER SUPPLY NETWORK**
- **ELECTRIC SUPPLY FOR ANY APPLICATION 115KV & 13.8 KV**
- **NATURAL GAS**
- **SECURITY AND MAINTENANCE, 24 HOURS A DAY, 365 DAYS PER YEAR**
- **PUBLIC AND PRIVATE TRANSPORT**
- **SEWAGE AND STORM DRAINAGE SYSTEMS**
- **NFPA AND FACTORY MUTUAL COMPLIANT FIRE LOOP**
- **STATE-OF-THE-ART WASTE WATER TREATMENT FACILITY**



**...SECOND INDUSTRIAL PARK WITH ENVIRONMENTAL CERTIFICATION...**





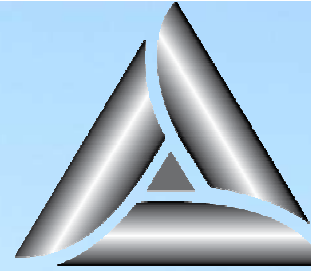
## ...INDUSTRIAL, LOGISTICAL AND CUSTOMS ADVANTAGES ...

- ✓ High Flexibility location , Domestic Zone and Free Trade Zone with railway terminal
- ✓ NFPA AND Factory Mutual compliant fire loop
- ✓ State-of-the-art waste treatment facility CERTIFICACIÓN DE CUMPLIMIENTO AMBIENTAL
- ✓ Connection with the most important High way of the country the NAFTA high way
- ✓ Logistic hub for the main logistics companies (JB HUNT, SCHNEIDER...)
- ✓ The biggest Railway Terminal with the NAFTA railway corridor .
- ✓ High security level with CCTV, trained dogs, guard and antinarcotics
- ✓ Customs Office with high speed clearance, offering regional services.
- ✓ Less maneuvers by forwarders in ports and borders.
- ✓ Less stopping time in Ports and Borders (Without warehousing cost)
- ✓ Inbound Container, coming with the original seals, (Containers without being checked in port or borders)
- ✓ Allow to use several customs programs like RFE(FTZ) and Maquila(IMMEX)
- ✓ Additional advantage from FTZ
  - Simplifying administrative controls
  - Less detail and control levels in the logistic operation
  - Non fiscal presence under shelter operation
  - More days for the international merchandise to stay (60 months).



## Offering

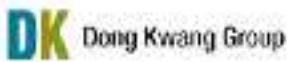
- AVAILABLE INDUSTRIAL LAND IN DOMESTIC AREA & FREE TRADE ZONE
- AVIALABLE BUILDING & WAREHOUSE SPACE IN FTZ & SHELTER
- BUILT TO SUIT PROJECTS / SALE & LEASE
- RAILROAD TERMINAL (GENERAL CARGO & CONTAINERS)
- CUSTOMS IN SITE
- FLEXIBILITY AND SUPPORT IN GOVERNMENT PERMISSIONS
- SURVILLANCE SYSTEMS AND SECURITY CONTROLS FOR HIGH SECURITY LEVEL



**INTERPUERTO**  
**PARQUE LOGISTICO**



...MUCH MORE THAN JUST AN INDUSTRIAL PARK...



OTSCON

INTERPUERTO