

FIRJAN – Federation of Industries of the State of Rio de Janeiro

CIN – International Business Center

Pedro Spadale
International Relations Coordinator

March, 2010

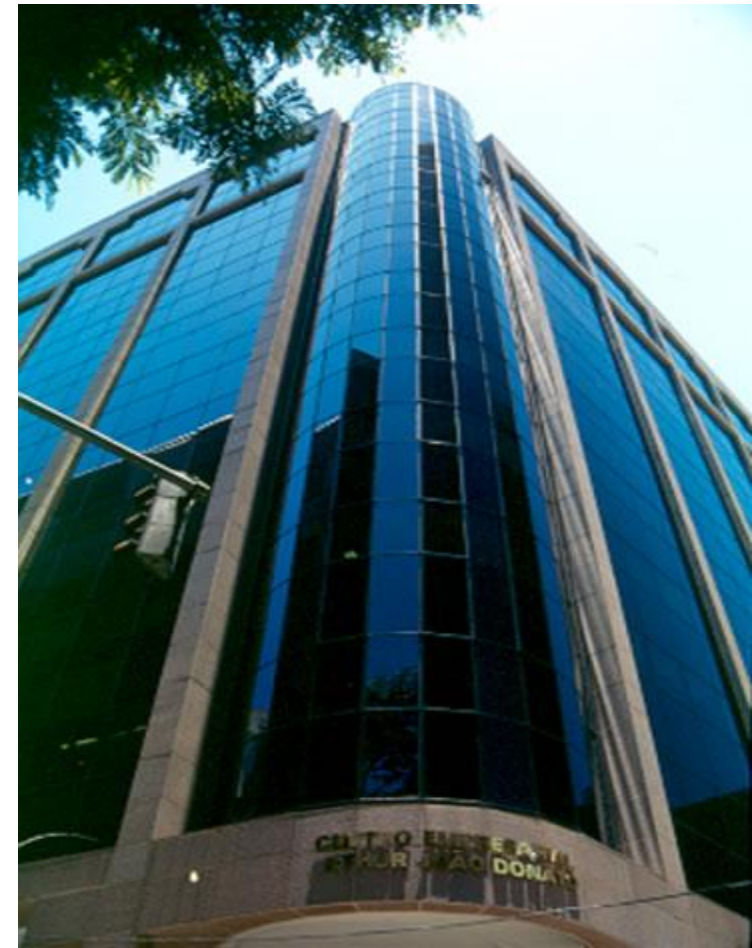
FIRJAN SYSTEM

- FIRJAN - Federation of Industries of the State of Rio de Janeiro
- CIRJ - Industrial Center of Rio de Janeiro
- SENAI - National Service for Industry Labor Training
- SESI - Social Assistance for Industrial Enterprises
- IEL - Euvaldo Lodi Institute
- **CIN - International Business Center**

FIRJAN/CIRJ SYSTEM

Mission:

**create a positive environment
for industrial sector
development**



CIN - International Business Center

An association between FIRJAN and SEBRAE/RJ to
promote and support Rio de Janeiro firms
in the international arena.



CIN's PARTNERS Advisory Board

I – Entities physically installed in the CIN premises:

Sistema
FIRJAN



SEBRAE
RJ



Câmara de Comércio italo-
Brasileira do Rio de Janeiro



SEBRAE
RJ

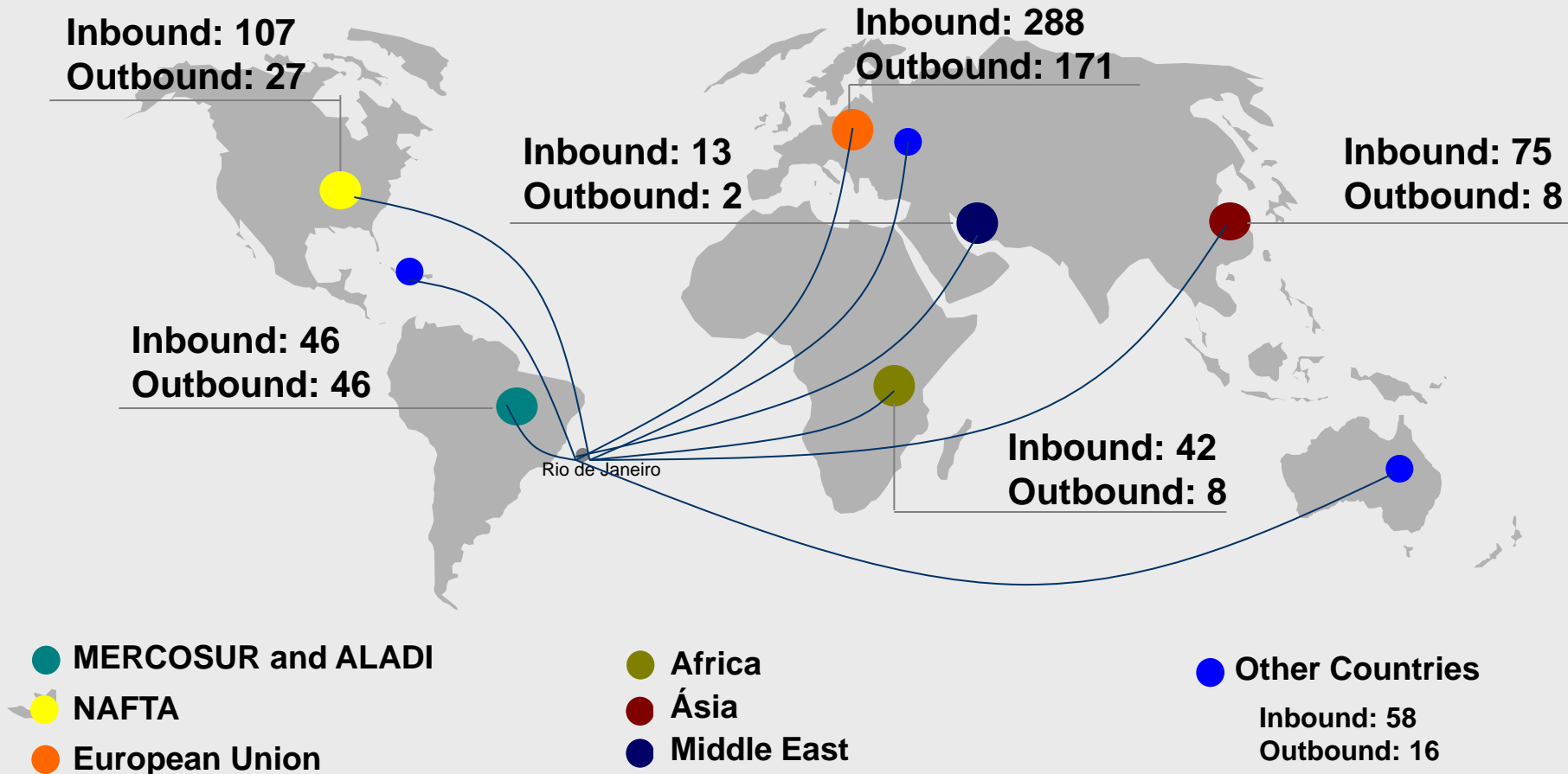
SERVICES PROVIDED BY CIN

- Fairs, Missions and Trade talks
- Match-making
- Seminars
- Market Research
- Publications
- Consulting in Foreign Trade
- Issue of Official Documents
- Courses and Training



MISSION: To Build Bridges

CIN's Inbound and Outbound Missions - 1997-2009



STRATEGIC OBJECTIVE:
Create International Business Interfaces

CIN

International Business Center

cin@firjan.org.br

www.firjan.org.br